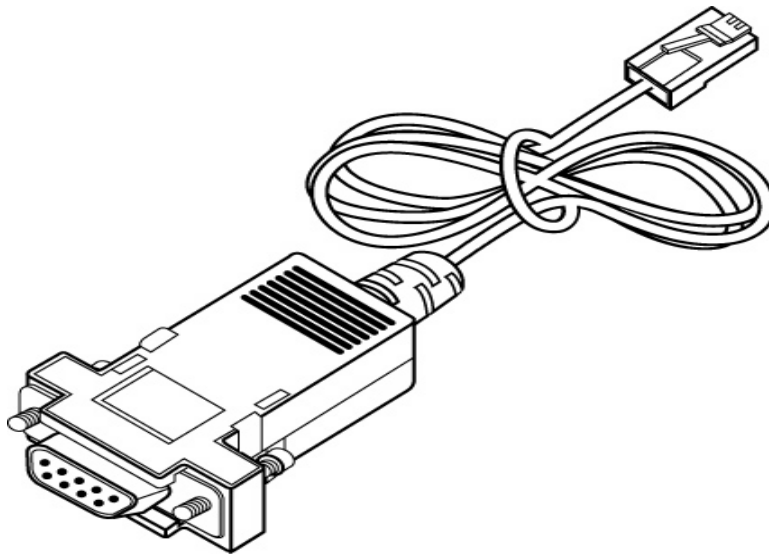


MT-800 PC PROGRAMMER USER' S GUIDE

The main function and frequency of MT-800 is supposed to work for PC PROGRAMMER.

The usage of this program is SOFTWARE INSTALLATION of WINDOWS OS to WINDOWS 98(FIRST, SECOND EDITION), WINDOW SERIES, AND WINDOWS XP for PERSONAL COMPUTER only.

1. INSIDE OF MT-800 PC PROGRAMMER KIT
PROGRAMMING KIT contains following.



- 1) PROGRAM CD

THE SOFRWARE VERSION SHOWS UP IN THE HELP INFO.

- 2)MT-800 PROGRAMMING LEAD

2. HARDWARE INSTALLATION

Connect MT-800 programming lead to personal computer com1 or com 2 and connect the other side to mic connector for finishing hardware

installation.

3. SOFTWARE INSTALLATION

There' s a CD include in the programming kit and inside of CD, there' s program called MT-800.EXE FILE, click that file, then it appears to be like below, and that would be end of the software installation.

GENEX Telecom

File Port Program Help

Model: MT800 2-Tone Data Program Read Write

System Option

Scan Option

Scan Speed (msec) 50 Attack Time (sec) 0 Resume Time (sec) 4 Home Ch No 1

☐ Priority Scan Enable Priority Scan Ch No 1

☐ Hook Scan Enable Look Back Time (sec) 4

T-O-T (Time-Out-Timer)

☐ T-O-T Enable TX Time-Out-Timer(sec) 180

☐ T-O-T Penalty Enable TOT Penalty Time (sec) 5

Power Saving

☐ Power Save Enable Save Off Time (msec) 200

Save On Time (msec) 400 Save Delay Time (sec) 4

Display

Channel Display CH

VOX

☐ VOX Enable VOX Sensitivity 2

Scan Mode

☒ Normal Scan TX ☐ Priority Scan TX ☐ Priority Select Scan ☐ Priority Only TX

Mode Option

☒ TX Delay ☐ Clear To Talk Enable ☐ Back Light Enable ☒ Beep Enable ☐ 2-Tone Receive Alarm ☐ Mode Key Lock ☐ BCL (Busy Channel Lockout) ☐ BCLO (Busy Channel Lockout Override)

Channel Data

Channel	RX	TX			Option							
CH	Name	Freq.	Rx Tone	IND	GRP	S-G	Freq.	Tx Tone	PWR	P-S	SC	B
1	CH		NO TONE	Off	Off	Off		NO TONE	L	Off	On	N
2	CH		NO TONE	Off	Off	Off		NO TONE	L	Off	On	N
3	CH		NO TONE	Off	Off	Off		NO TONE	L	Off	On	N
4	CH		NO TONE	Off	Off	Off		NO TONE	L	Off	On	N
5	CH		NO TONE	Off	Off	Off		NO TONE	L	Off	On	N
6	CH		NO TONE	Off	Off	Off		NO TONE	L	Off	On	N
7	CH		NO TONE	Off	Off	Off		NO TONE	L	Off	On	N

RF Frequency : 148 MHz ~ 174 MHz, 5W/40W Mobile

※ Importance of PC PROGRAM

1) Before start PC PROGRAM, make sure for read or write program, to follow steps below.

1-1) for write

MONITOR BUTTON + POWER ON

WRITE → DISPLAY AT THE LCD

MODE BUTTON

WRITE NOW → DISPLAY AT THE LCD

1-2) for read

MONITOR BUTTON + POWER ON

CHANNEL UP OR DOWN BUTTON

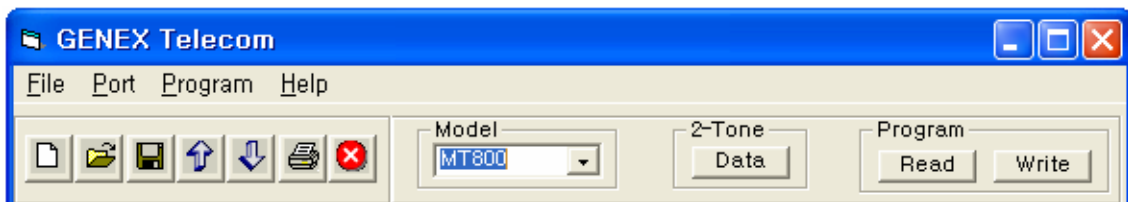
READ → DISPLAY AT THE LCD

MODE BUTTON

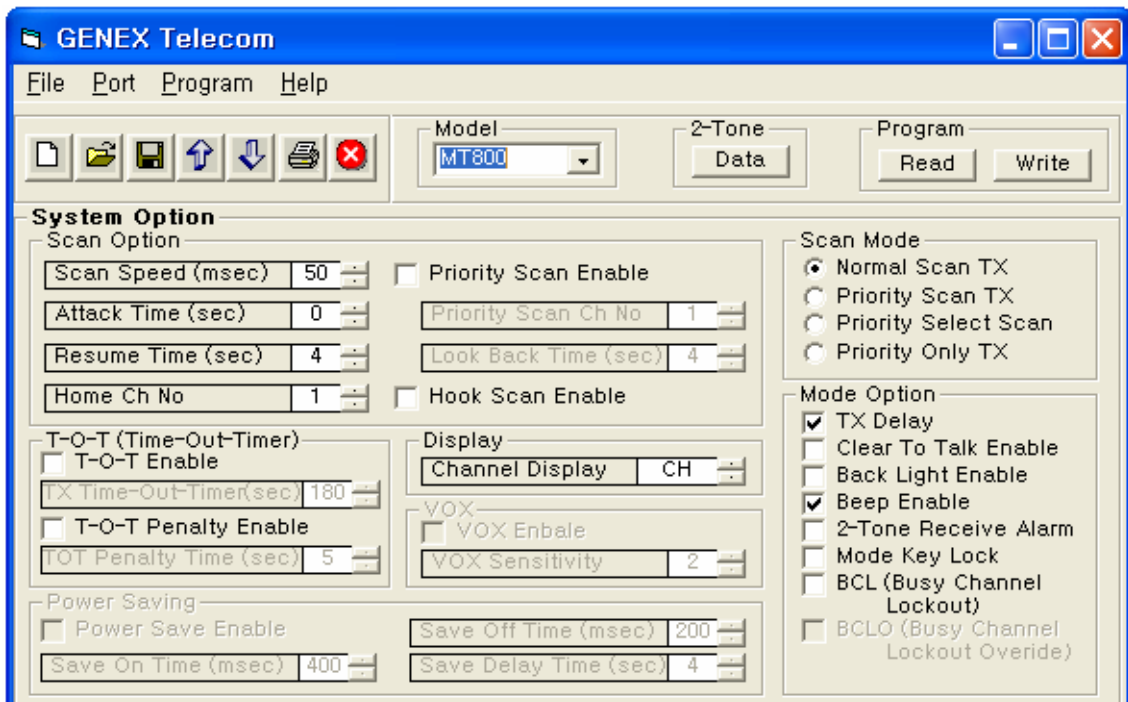
READ NOW → DISPLAY AT THE LCD

4. Model selection

If install MJT-800.EXE file in the computer, it appears model selection block window and will blank, but right now the program is set for only MT-800, so no need to select the extra and get to programming right away.



5. Setting up for system option



1) com port set up

This is for hardware setting of port set up only. There are port 1 to port 4.

1) PROGRAM READ AND WRITE

Read the data from set or write the one.

2) SCAN OPTION SET UP

3-1) SCAN SPEED : 50 ~ 500msec range. Primary stage is 50msec.

3-2) ATTACK TIME : 0 ~ 4 sec range. Primary stage is 0sec.

3-3) RESUME TIME : 1 ~ 10 sec range. Primary stage is 4sec.

3-4) HOME CHANNEL : 1 ~ 32CHANNEL range.

Primary stage is 1 CHANNEL.

3) DISPLAY SET UP

Can be select set display. CHANNEL, NAME AND FREQUENCY are possible.

4) MODE OPTION

You can change and select what you want.

5) SCAN MODE

You can change and select what you want.

7) T-O-T SETUP

You can change and select what you want. If you need.

Primary stage is DISABLE.

ENABLE : 10 ~ 990sec range, STEP is 10 sec.

PENALTY ENABLE : 1 ~ 60sec range, STEP is 1 sec.

6. Setting up for Tool OPTION



1) NEW CREATE : Can be change the original setting or you can make a your own setting.

2) OPEN FILE : Can be see the old data or can find you one.

3) SAVE : Save the new Data

- 4) UP LOAD :Up load the new data from PC to Set
- 5) DOWN LOAD : Down load from the set.
- 6) PRINT : Can be print.
- 7) EXIT : Use this for quit from PROGRAM.

7. Setting up for Frequency

Channel Data											
Channel		RX					TX			Option	
CH	Name	Freq.	Rx Tone	IND	GRPS	S-G	Freq.	Tx Tone	PWR	P-S	B
1	CH		NO TONE	Off	Off	Off		NO TONE	L	Off	N
2	CH		NO TONE	Off	Off	Off		NO TONE	L	Off	N
3	CH		NO TONE	Off	Off	Off		NO TONE	L	Off	N
4	CH		NO TONE	Off	Off	Off		NO TONE	L	Off	N
5	CH		NO TONE	Off	Off	Off		NO TONE	L	Off	N
6	CH		NO TONE	Off	Off	Off		NO TONE	L	Off	N
7	CH		NO TONE	Off	Off	Off		NO TONE	L	Off	N

RF Frequency : 148 MHz ~ 174 MHz, 5W/40W Mobile

- 1) You can input the frequency form 148MHz to 174MHz every 5KHz - 6.25KHz STEP.
- 2) NAME section has originally set up CH, every CHANNEL can be input the own name that is possible 8 number or alphabet.
- 3) TONE OPTION is composed of NO TONE, CTCSS, DCS, IDCS, CTCSS 49 TONE CODE (STANDARD CTCSS 38 , NON STANDARD CTCSS 11), DCS/IDCS 83 NORMAL CODE AND 83 INVERT CODE.
- 4) If you want to input the TONE, you have to accept and then you can go to next step.

NOTICE

There are no user-serviceable points inside this transceiver. All service jobs must be referred to your Authorization Service Center or Network Administrator

Safety/ Warning Information

WARNING – DO NOT operate the MT-800 radio when someone (bystanders) outside the vehicle are within following range.

Safety Training Information:

Antennas used for this transmitter must not exceed an antenna gain of 0 dBd. The radio must be in vehicle-mount configurations with a maximum operating duty factor not exceeding 50%, in typical Push-to-Talk configurations.

This radio is restricted to occupational use, work related operations only where the radio operator must have the knowledge to control the exposure conditions of its passengers and bystanders by maintaining the minimum separation distance of following range.

Failure to observe these restrictions will result in exceeding the FCC RF exposure limits.

Antenna Installation:

For rear deck trunk installation, the antenna must be located at least the following range away from rear seat passengers and bystander in order to comply with the FCC RF exposure requirements.

For roof top installation, the antenna must be placed in the center of the roof.

Radiated frequency and Distance

MT-800
1.97 Feet (0.6 m)

Sample Part 15 Rule Label

This device complies with part 15 of
FCC Rules.

Operation subject to that this device
does not cause harmful interference.

! CAUTION !

Device restricted to occupational use
to satisfy FCC RF exposure
compliance.

See owner's manual for specific
operating requirement.